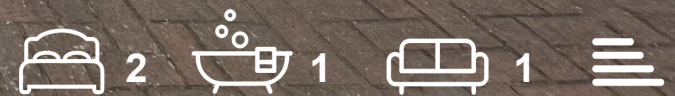


ALLDAY
& MILLER



Lonsdale Close, Uxbridge, UB8 3BY
£1,750 Per month





Lonsdale Close, Uxbridge, UB8 3BY

£1,750 Per month

- Ground Floor Maisonette
- Stunning Large Open Plan Living Area
- Off Street Driveway Parking
- Wood Flooring
- Two Bedrooms
- Private Rear Garden With Raised Decked Area
- Large External Storage Shed
- Ample Storage Throughout

Description

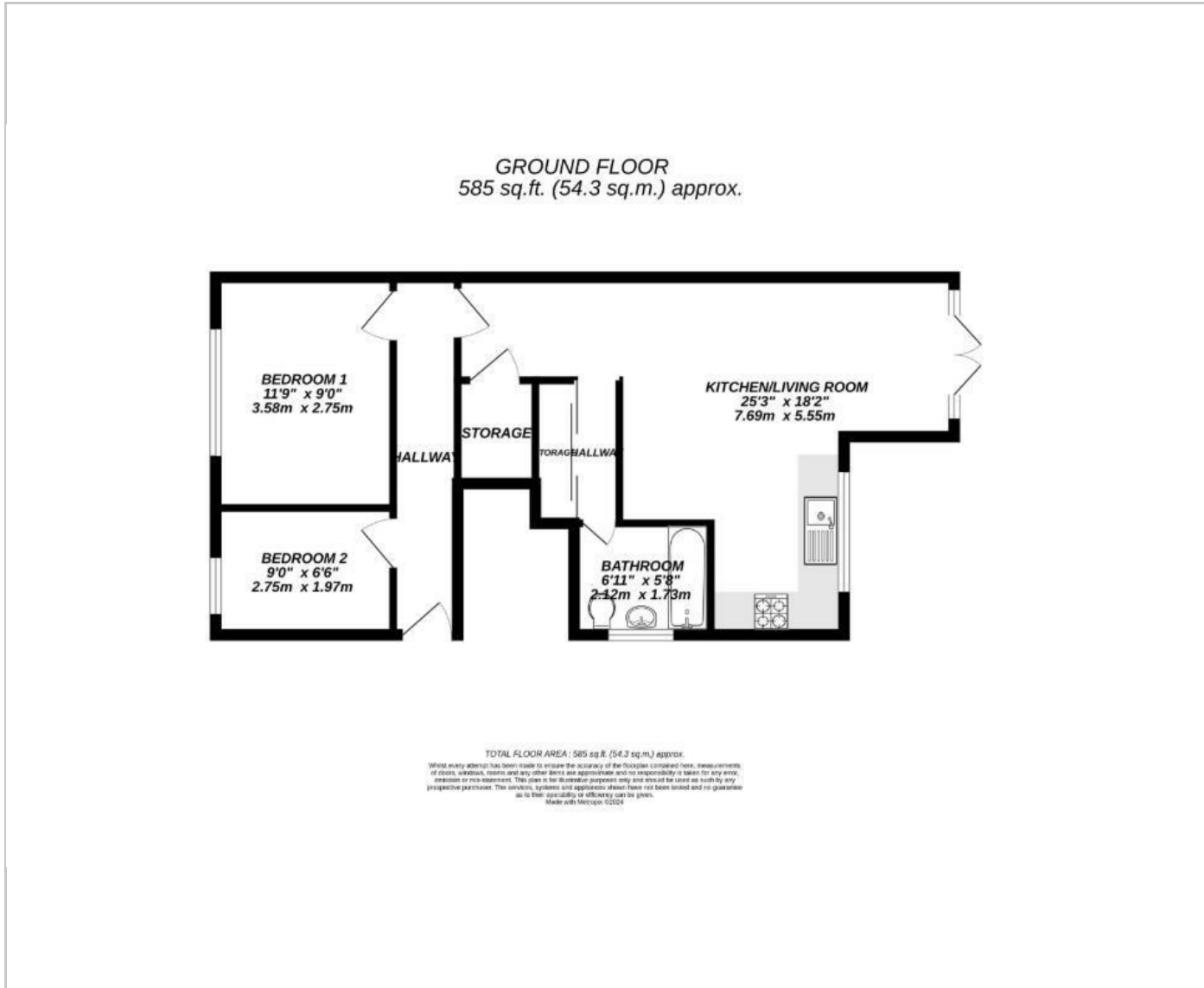
This property is ideal for small families, couples, or individuals seeking a serene living space. The property benefits from a generous reception room that flows seamlessly into a large open-plan kitchen diner. This inviting area is perfect for entertaining guests or enjoying family meals. Leading from this space is a pretty rear garden, which includes a raised decked area, perfect for alfresco dining or simply relaxing in the sun. The garden offers a private retreat. Additionally, the property includes a large external storage shed, providing extra space for your belongings, and driveway parking for one car.

Situation

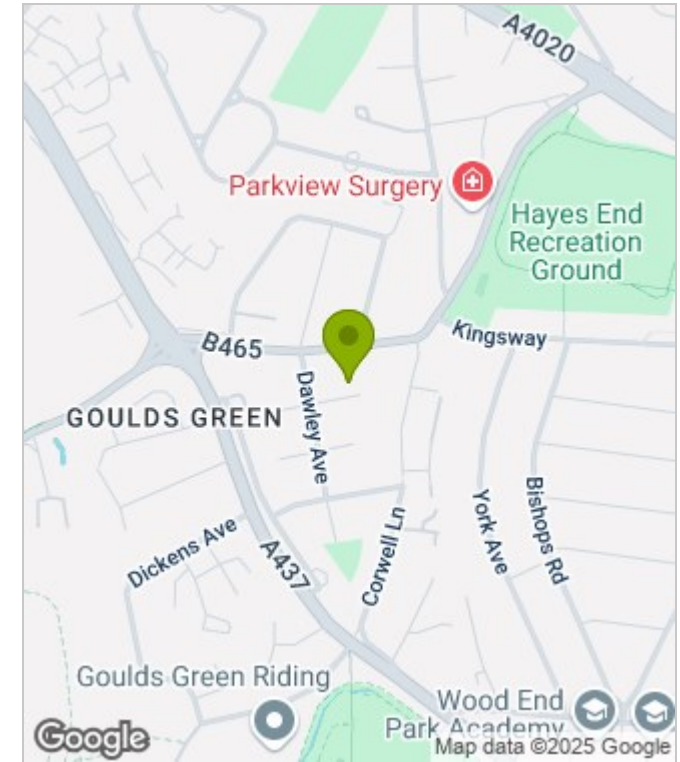
Lonsdale Close is a quiet cul de sac in Hillingdon close to local shops and schools. There are many bus routes near by and the Uxbridge Road is only a short walk. Heathrow Airport, Stockley Park and Brunel University are all in close proximity along with the M4 offering links to London and the Home counties.



Floor Plans



Area Map



Energy Performance Graph



These particulars, whilst believed to be accurate are set out as a general outline only for guidance and do not constitute any part of an offer or contract. Intending purchasers should not rely on them as statements of representation of fact, but must satisfy themselves by inspection or otherwise as to their accuracy. No person in this firm's employment has the authority to make or give any representation or warranty in respect of the property.